

WORKSPACE

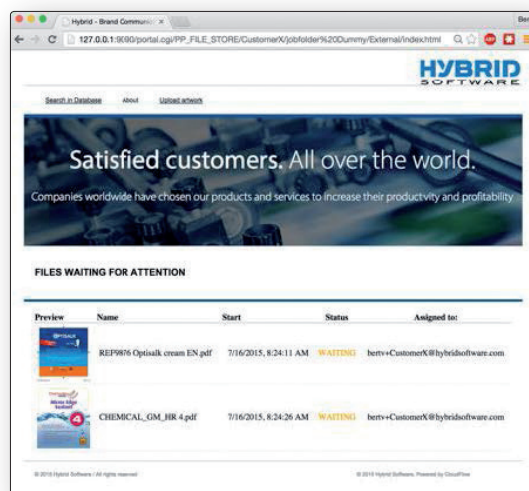
Customer Portals

Customers expect a good online experience. WORKSPACE is the platform you can use to provide these services. With WORKSPACE you can host a customer portal that ties directly to your workflow and other processes.

WORKSPACE portals are linked to the relevant parts of your file servers, and with proper user and permission management. Everything is HTML5 based, and the backend services are JSONRPC, callable from AJAX. Any web developer will feel right at home building onto this strong foundation.

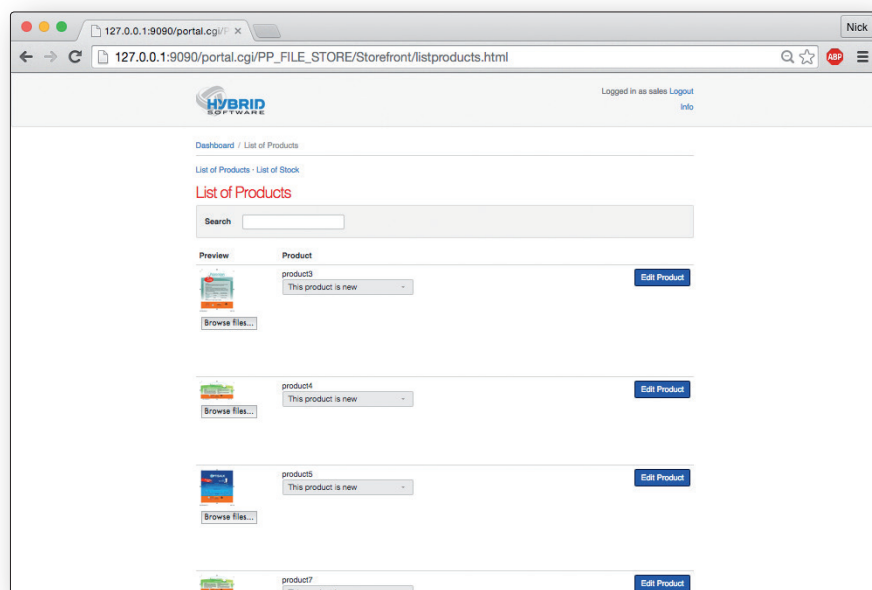
Economies of Scale

If you have multiple sites in your group, stop buying the same software everywhere. CLOUDFLOW WORKSPACE can share its components across the group, making sure that the licenses are used where they are needed, giving you the best return on investment. And when it's time to buy more software, it's because the amount of orders are also up!



Left:
Create a custom HTML5 website
on top of CLOUDFLOW

Below:
Combine modern web design
with the information inside
CLOUDFLOW to develop
a compelling portal for your
customers



BENEFITS

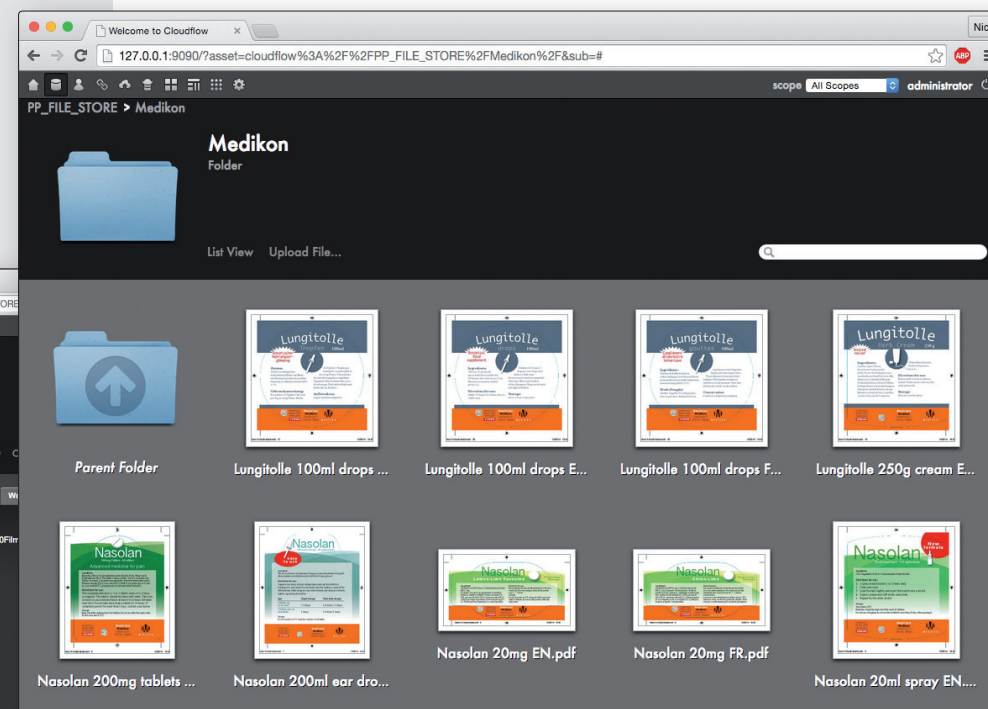
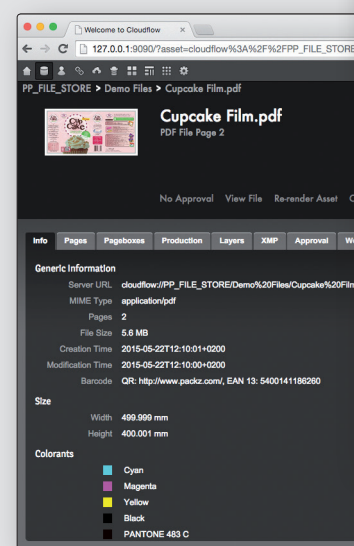
- Streamlined order intake linked with prepress
- Automated file delivery to project stakeholders
- Easy search capabilities for files, even on different located servers
- Strong link with PACKZ to submit files and quality control output
- Support for custom web applications hosted on top of CLOUDFLOW
- Centralization of workflows for geographically different locations.
- Powerful connectivity tools to integrate within existing applications

WORKSPACE

One Control Center for your Entire Production Workflow

Right:
File overview of your
production workspace

Below:
File detail: metadata
& preview generation



CLOUDFLOW is an innovative new server platform from HYBRID Software for your graphical production.

Built for cloud-based services, it brings together the recent innovations in internet and software technology, hardware advancements and graphical production innovation.

WORKSPACE is the heart of CLOUDFLOW, giving you unparalleled control over your files, data and workflows.

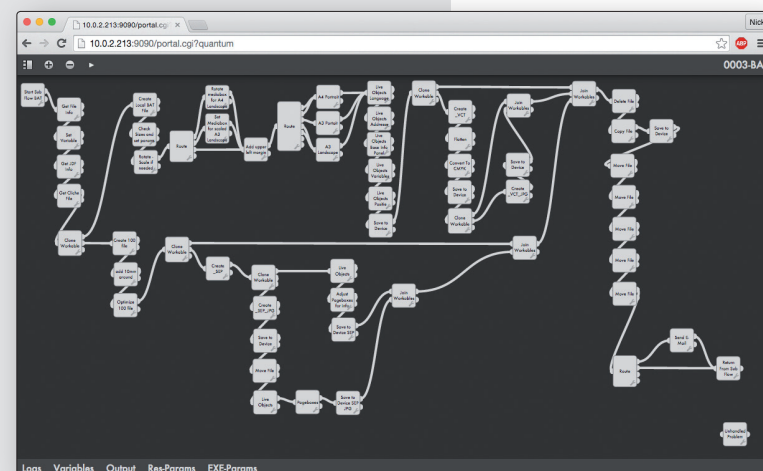
It helps coordinate your operators, wherever they are, and reaches out to customers in an automated and cost-effective way.

File Management
WORKSPACE indexes all your existing file-servers, using your existing file-server organization. It can operate in a single location or across the complete enterprise.

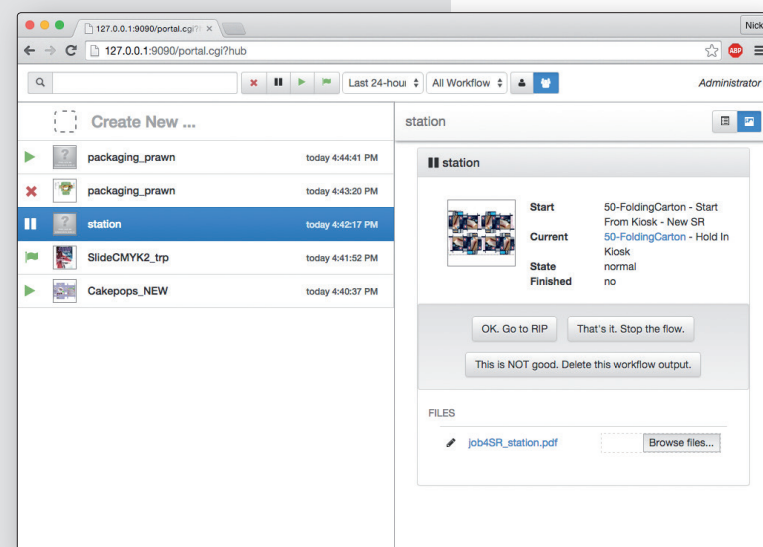
CLOUDFLOW recognizes graphical file formats and extracts meta information on the fly: separations, screening information, page boxes, etc. ... All this information becomes available for searching and is logged in CLOUDFLOW's powerful database.

Assets can be tagged, versioning can be recognized, and by providing a single group-wide file space, it becomes easier to define and execute workflows that span different servers and different geographical locations.

WORKSPACE



The Cloudflow workflow engine can automate your processes



KIOSK drives complex workflows from within this intuitive interface

Workflow Engine

The workflow engine in CLOUDFLOW WORKSPACE has been developed from the ground up to be used as a production and business flow engine.

The visual workflow editor allows users to graphically build workflows, using more than 75 built-in functionality nodes.

It is possible to work with variables, pull in information from XML files or external database systems, and even use external hotfolders and command-line applications. The workflows are fully distributed, sharing files and processing across different servers on the network. WORKSPACE workflows support Javascripting, which make the possibilities virtually endless.

KIOSK

Being able to build efficient workflows to support your business process is a vital step, and CLOUDFLOW's workflow builder helps you accomplish this.

But for day-to-day use your operators need a good tool to interact with your workflows, and that's where KIOSK comes in.

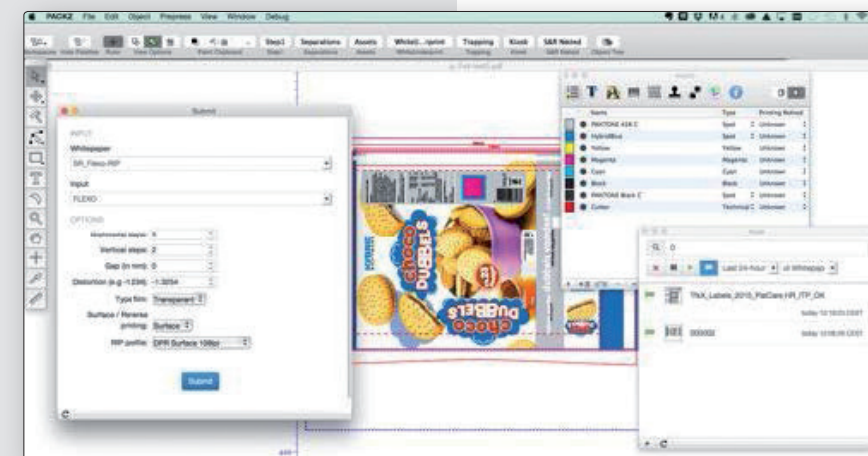
KIOSK is our new HTML5 web interface that allows your operators to submit files and data into the workflow, follow-up their jobs, view and debug problems, and access their next job for production.

KIOSK is the easy to use interface for your internal processes.

HIGHLIGHTS

- Automatic indexing and metadata generation of existing file servers
- Blazing fast workflow engine with endless possibilities
- Modular approach to grow with your organization
- User-friendly and web-based interface to interact with workflows
- Support for custom applications and web portals on top of CLOUDFLOW
- Integrated approach with central database for all CLOUDFLOW applications
- Open & modern technology architecture
- Strong link with PACKZ for integrated PDF-editing

WORKSPACE



KIOSK interface is fully integrated in PACKZ

Keep your Options Open

Workspace is fully featured in its own right, but can be expanded in other directions to bring additional functionality. Add an optional soft-proofing engine called PROFSCOPE – a state-of-the-art RIP, or PACKZFLOW – our prepress automation solution.

All these components take advantage of the distributed nature of CLOUDFLOW, the extensive workflow building and the unified file management that WORKSPACE brings.

Together with PACKZ – a Strong Couple

PACKZ desktop users can connect to CLOUDFLOW WORKSPACE and open, save and launch jobs in any workflow.

If the workflow needs operator attention or parameter input, the operator can follow this up from within the PACKZ application.

TECH TALK

- All features accessible from 3th party applications by JSON REST API
- Build on a robust NoSQL database
- Build-in webserver
- Fully scalable worker configurations
- Multiple workspaces can be linked with a single database

PROFSCOPE

- Online HTML5 web viewer
- Quality control features
- Annotation capabilities
- Comparison tools
- Support for various file formats
- Raster analyzer for 1 bit files
- Support for extended approval flows
- Easy to use for the end user
- 3D viewing & approval

PACKZFLOW

- Automated prepress actions on PDF files
- Based on PACKZ engine
- Linked with various data sources for information panels
- Tabular or nested step & repeat
- Separation control
- Trapping based upon selections made in the workflow
- Barcode modifications

PRINTPLANNER

- Step and repeat module for digital presses
- Semi-automated within web user interface
- Fully automated by workflow configuration
- Advanced mark capabilities
- Gang multiple jobs to increase profitability

RIP

- Native PDF 1.7 RIP
- Dot viewer included
- Support for object-based screening
- Screening control on separation level
- Advanced curves editor
- CIP3 output
- Various dot shapes available
- Support for variable work loads